

## VHIN 10 Model

Portable design, easy to use, ideal for on-site jobs  
Includes four yokes.



Min. Bore 15 mm (0.6")  
Max. O.D. 210 mm (8.3")  
Max. Width 120 mm (4.8")  
Max. Weight 15 kg (33 lbs.)

<b>VHIN 10</b>	230V, Yoke set: 10/14/20/40
<b>VHIN 101</b>	120V, Yoke set: 10/14/20/40

## VHIN 35 Model

Basic model with choice of seven yokes  
Picture at right shows optional vertical support arm.



Min. Bore 15 mm (0.6")  
Max. O.D. 480 mm (18.9")  
Max. Width 150 mm (5.9")  
Max. Weight 35 kg (77 lbs.)  
Heats parts in horizontal  
and vertical positions.

<b>VHIN 35</b>	230V, Yoke set: 10/20/40/60, Horizontal Support
<b>VHIN 351</b>	120V, Yoke set: 10/20/40/60, Horizontal Support
<b>VHIN 352</b>	230V, Yoke set in carrier: 10/14/20/30/40/50/60, Horizontal Support
<b>VHIN 354</b>	120V, Yoke set in carrier: 10/14/20/30/40/50/60, Horizontal Support

## VHIS 35 Model

This bench-top model is the most popular among customers  
and features a unique swing arm for ergonomic working.



Min. Bore 15 mm (0.6")  
Max. O.D. 480 mm (18.9")  
Max. Width 150 mm (5.9")  
Max. Weight 35 kg (77 lbs.)

<b>VHIS 35</b>	230V, Yoke set: 10/20/40/60, Horizontal Support
<b>VHIS 351</b>	120V, Yoke set: 10/20/40/60, Horizontal Support
<b>VHIS 352</b>	230V, Yoke set in carrier: 10/14/20/30/40/50/60, Horizontal Support
<b>VHIS 353</b>	120V, Yoke set in carrier: 10/14/20/30/40/50/60, Horizontal Support

## VHIS 100 Model

Large capacity bench-top model with swing arm

Min. Bore 30 mm (1.2")  
Max. O.D. 720 mm (28.3")  
Max. Width 200 mm (7.9")  
Max. Weight 125 kg (275 lbs.)

<b>VHIS 1001</b>	400V, Yoke set: 20/30/40/50/70
<b>VHIS 1006</b>	400V, Yoke set: 20/40/70
<b>VHIS 1009</b>	450V, Yoke set: 20/40/70
<b>VHIS 1010</b>	450V, Yoke set: 20/30/40/50/70
<b>VHIS 1011</b>	500V, Yoke set: 20/30/40/50/70
<b>VHIS 1014</b>	500V, Yoke set: 20/40/70



## VHIS 200 Model

Mobile heavy-duty heater with unique swing arm

Min. Bore 30 mm (1.2")  
Max. O.D. 1020 mm (40.2")  
Max. Width 265 mm (10.4")  
Max. Weight 250 kg (551 lbs.)



<b>VHIS 2005</b>	400V, Yoke set: 20/30/40/60/80
<b>VHIS 2006</b>	450V, Yoke set: 20/30/40/60/80
<b>VHIS 2007</b>	500V, Yoke set: 20/30/40/60/80

## TIMKEN INDUCTION HEATERS TECHNICAL DATA:

Type	VHIN 10	VHIN 35	VHIS 35	VHIN 75	VHIS 75	VHIS 100
<b>ELECTRICITY</b>						
Power Rating	3.6 k VA	3.6 kVA	3.6 kVA	3.6 kVA	3.6 kVA	8 kVA
Voltage/Current	120V/20A	120/20A	120/20A	120V/15A	120V/15A	400/450/500
	230V/16A	230V/16A	230V/16A	230V/16A	230V/16A	20A
Different Voltage Option	—	—	—	—	—	230V
Frequency	50/60 Hz	50/60Hz	50/60Hz	50/60Hz	50/60Hz	50/60Hz
Swing Arm	No	No	Yes	No	Yes	Yes
Plug	Yes	Yes	Yes	Yes	Yes	—
<b>WORK PIECE</b>						
Max. Weight						
- Bearings	15 kg (33.1 lbs.)	35 kg (77.2 lbs.)	35 kg (77.2 lbs.)	95 kg (209.4 lbs.)	95 kg (209.4 lbs.)	125 kg (275.6 lbs.)
- Other Parts	10 kg (22.1 lbs.)	20 kg (44.1 lbs.)	20 kg (44.1 lbs.)	50 kg (110.2 lbs.)	50 kg (110.2 lbs.)	75 kg (165.4 lbs.)
Min. Bore Diameter	15 mm (0.6")	15 mm (0.6")	15 mm (0.6")	15 mm (0.6")	5 mm (0.6")	30 mm (1.2")
Max O.D.	210 mm (8.3")	340/480 mm	340/480 mm	520/750 mm	520/750 mm	480/720 mm
Vertical/Horizontal		(13.39"/18.9")	(13.4"/18.9")	(20.5"/29.5")	(20.5"/29.5")	(18.9"/28.4")
Max. Work Piece Width	120 mm (4.7")	150 mm (5.9")	150 mm (5.9")	230 mm (9.1")	230 mm (9.1")	200 mm (7.9")
<b>POLE DIMENSIONS</b>						
Area between the poles	120 x 130 mm	150 x 140 mm	150 x 140 mm	200 x 230 mm	200 x 230 mm	200 x 180 mm
Width x Height	(4.7" x 5.1")	(5.9" x 5.5")	(5.9" x 5.5")	(7.9" x 9.1")	(7.9" x 9.1")	(7.9" x 7.1")
Pole Section	40 mm (1.6")	60 mm (2.4")	60 mm (2.4")	120/60 mm (2.4"/4.7")	120/60 mm (2.4"/4.7")	70 mm (2.8")
Pole Height	130 mm (5.1")	140 mm (5.5")	140 mm (5.5")	230 mm (9.1")	230 mm (9.1")	210 mm (8.3")
<b>CONTROLS</b>						
Temperature Control						
Max. Temp	150° C (302° F)	240° C (464° F)	240° C (464° F)	240° C (464° F)	240° C (464° F)	240° C (464° F)
Time Control						
Max. Time	0 – 30 Min.	0 – 45 Min.	0 – 45 Min.	0 – 45 Min.	0 – 45 Min.	0 – 60 Min.
Auto Power Reduction	—	—	—	Automatically	Automatically	Automatica
<b>OPTIONS</b>						
Yokes, Standard	10,14, 20, 40 mm (0.4", 0.6", 0.8", 1.6")	10, 14, 20, 30, 40, 50, 60 mm (0.4", 0.6", 0.8", 1.2", 1.6", 2.0", 2.4")	10, 14, 20, 30, 40, 50, 60 mm (0.4", 0.6", 0.8", 1.2", 1.6", 2.0", 2.4")	10, 14, 20, 30, 40, 50, 60 mm (0.4", 0.6", 0.8", 1.2", 1.6", 2.0", 2.4")	10, 14, 20, 30, 40, 50, 60 mm (0.4", 0.6", 0.8", 1.2", 1.6", 2.0", 2.4")	20, 30, 40, 50 (0.8", 1.2", 1.6", 2.8")
Support for Horizontal Heating	(in case) —	(in carry box) Yes	(in carry box) Yes	(in carrier) Yes	(in carrier) Yes	Yes
Mobile	—	—	—	—	—	—
Temperature Control	—	480° C (896° F)	480° C (896° F)	480° C (896° F)	480° C (896° F)	480° C (896° F)
<b>DIMENSIONS</b>						
Dimensions	435 x 225 x 275 mm (17.1" x 8.9" x 10.8")	340 x 290 x 310 mm (13.4" x 11.4" x 12.2")	340 x 290 x 380 mm (13.4" x 11.4" x 15.0")	440 x 370 x 360 mm (17.3" x 14.6" x 14.2")	440 x 370 x 360 mm (17.3" x 14.6" x 14.2")	630 x 365 x 310 mm (24.8" x 14.4" x 12.2")
Package Size	500 x 250 x 350 mm (19.7" x 9.8" x 13.8")	600 x 450 x 600 mm (23.6" x 17.7" x 23.6")	600 x 450 x 600 mm (23.6" x 17.7" x 23.6")	700 x 500 x 700 mm (27.6" x 19.7" x 27.6")	700 x 500 x 700 mm (27.6" x 19.7" x 27.6")	700 x 500 x 700 mm (27.6" x 19.7" x 27.6")
Mass Heater Body (excludes yokes)	21 kg (46.3 lbs.) (includes yokes)	29 kg (63.9 lbs.)	31 kg (68.3 lbs.)	36 kg (79.4 lbs.)	38 kg (83.8 lbs.)	53 kg (116.8 lbs.)
<b>MISCELLANEOUS</b>						
Sound Signal	yes	yes	yes	yes	yes	yes
Temperature Hold	yes	yes	yes	yes	yes	yes
Demagnetizing <2 A/cm	yes	yes	yes	yes	yes	yes
Thermal Safety Guard	yes	yes	yes	yes	yes	yes
Magnetic Temperature Probe	yes	yes	yes	yes	yes	yes
<b>DIGITAL DISPLAY</b>						
Temperature	yes	yes	yes	yes	yes	yes
Time	yes	yes	yes	yes	yes	yes
Error Report	yes	yes	yes	yes	yes	yes

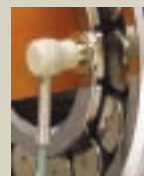
### DIGITAL CONTROLS:

All digital controls operate by time or temperature in °C or °F



### TEMPERATURE PROBE:

Each Timken Induction Heater model is supplied with a magnetic temperature probe. A clamp is also available for nonferrous components. Replacement probes are also available for purchase.



	VHIS 200	VHIS 300	VHIS 400	VHIN 550	VHIN 800	VHIN 900
	12 kVA	24 kVA	12 kVA	24 kVA	40 kVA	95 kVA
V	400/450/500V	400/450/500V	400/450/500V	400/450/500V	400/450/500V	400/450/500V
	32A	63A	32A	63A	100A	240A
	—	230V	—	—	-	-
	50/60Hz	50/60Hz	50/60Hz	50/60Hz	50/60Hz	50/60Hz
	Yes	Yes	Yes	No	No	No
	—	—	—	—	-	-
6 lbs.)	250 kg (551.2 lbs.)	350 kg (771.6 lbs.)	550 kg (1,212.5 lbs.)	600 kg (1,322.8 lbs.)	1250 kg (2,755.8 lbs.)	On request
lbs.)	150 kg (330.7 lbs.)	250 kg (551.2 lbs.)	450 kg (992.1 lbs.)	350 kg (771.6 lbs.)	750 kg (1,653.5 lbs.)	On request
)	30 mm (1.2")	30 mm (1.2")	60 mm (2.4")	85 mm (3.4")	85 mm (3.4")	145 mm (5.7")
n	700/1020 mm	700/1020 mm	920 mm (36.2")	900 mm (35.4")	1400 mm (55.1")	2500 mm (98.4")
)	(27.6"/40.2")	(27.6"/40.2")				
)	265 mm (10.4")	265 mm (10.4")	350 mm (13.8")	400 mm (15.8")	420 mm (16.5")	700 mm (27.6")
m	265 x 310 mm	265 x 320 mm	350 x 305 mm	390 x 400 mm	660 x 420 mm	On request
)	(10.4" x 12.2")	(10.4" x 12.6")	(13.8" x 12.0")	(15.4" x 15.8")	( 26.0" x 16.5")	
)	80 mm (3.2")	110 x 80 mm	170/110 x 80 mm	100 mm (3.9")	150 mm (5.9")	240 mm (9.5")
		(4.3" x 3.2")	(6.7"/4.3" x 3.2")			
)	310 mm (12.2")	320 mm (12.6")	305 mm (12.0")	390 mm (15.4")	660 mm (26.0")	750 mm (29.5")
° F)	240° C (464° F)	240° C (464° F)	240° C (464° F)	240° C (464° F)	240° C (464° F)	240° C (464° F)
	0 – 99 Min.	0 – 99 Min.	0 – 99 Min.	0 – 99 Min.	0 – 99 Min.	0 – 99 Min.
lly	Automatically	Automatically	Automatically	Automatically	Automatically	Automatically
0, 70 mm	20, 30, 40, 60, 80 mm	20, 30, 40, 60, 80 mm	40, 60, 80 mm	60, 80, 100 mm	60, 80, 100, 150 mm	100, 150, 200, 240 mm
1.6", 2.0",	(0.79", 1.18", 1.57",	(0.8", 1.2", 1.6", 2.4",	(1.6", 2.4", 3.2")	(2.4", 3.2", 4.0")	(2.4", 3.2", 3.9", 5.9")	(3.9", 5.9", 7.9", 9.5")
	2.36", 3.15")	3.2")				
	Yes	Yes	Yes	Yes	Yes	Yes
	Yes	Yes	Yes	On request	On request	On request
° F)	480° C (896° F)	480° C (896° F)	480° C (896° F)	480° C (896° F)	480° C (896° F)	480° C (896° F)
470 mm	950 x 640 x 1000 mm	950 x 640 x 1000 mm	1200 x 640 x 1000 mm	1000 x 500 x 1350 mm	1500 x 600 x 1470 mm	2300 x 1000 x 1000 mm
x 18.5")	(37.4" x 25.2" x 39.4")	(37.4" x 25.2" x 39.4")	(47.2" x 25.2" x 39.4")	(39.4" x 19.7" x 53.2")	(59.1" x 23.6" x 57.9")	(90.6" x 39.4" x 39.4")
700 mm	1140 x 750 x 1000 mm	1140 x 750 x 1000 mm	1250 x 750 x 1000 mm	1400 x 700 x 1600 mm	1920 x 950 x 1720 mm	Custom
x 27.6")	(44.9" x 29.5" x 39.4")	(44.9" x 29.5" x 39.4")	(49.2" x 29.5" x 39.4")	(55.1" x 27.6" x 63.0")	(75.6" x 37.4" x 67.7")	
lbs.)	120 kg (264.6 lbs.)	175 kg (385.8 lbs.)	205 kg (452.0 lbs.)	200 kg (440.9 lbs.)	660 kg (1,455.1 lbs.)	2350 kg (5,180.9 lbs.)
s	yes	yes	yes	yes	yes	yes
s	yes	yes	yes	yes	yes	yes
s	yes	yes	yes	yes	yes	yes
s	yes	yes	yes	yes	yes	yes
s	yes	yes	yes	yes	yes	yes
s	yes	yes	yes	yes	yes	yes
s	yes	yes	yes	yes	yes	yes
s	yes	yes	yes	yes	yes	yes

### HORIZONTAL SUPPORT:

Support for heating in horizontal position.



Plug & Heat Models - please add the following suffix to the appropriate part number to identify your plug:

Suffix	Plug type
-	European plug
GB	UK 3-pin plug
US	US 2-pin plug



## VHIS 300 Model

Mobile heavy-duty heater with unique swing arm

Min. Bore 30 mm (1.2")  
Max. O.D. 1020 mm (40.2")  
Max. Width 265 mm (10.4")  
Max. Weight 350 kg (772 lbs.)  
Operating panel in °C or °F.



<b>VHIS 3004</b>	400V, Yoke set: 20/30/40/60/80
<b>VHIS 3005</b>	450V, Yoke set: 20/30/40/60/80
<b>VHIS 3006</b>	500V, Yoke set: 20/30/40/60/80

## VHIN 550 Models

Powerful heater for exceptionally heavy components up to 600 kg (1,322 lbs.). Popular in workshops within steel mills, paper mills and gear box manufacturing. Heats parts in horizontal and vertical positions.

Min. Bore 85 mm (3.4")  
Max. O.D. 900 mm (35.4")  
Max. Width 400 mm (15.8")  
Max. Weight 600 kg (1,322 lbs.)

<b>VHIN 5502</b>	400V, Yoke: 100 Yoke, Flash Alarm
<b>VHIN 5503</b>	450V, Yoke: 100 Yoke, Flash Alarm
<b>VHIN 5504</b>	500V, Yoke: 100 Yoke, Flash Alarm



## VHIN 800 Models

Powerful heater for exceptionally heavy components up to 1,250 kg (2,756 lbs.). Popular in workshops within steel, rail, wind, paper and gear box operations. Heats parts in horizontal and vertical positions.

Min. Bore 85 mm (3.4")  
Max. O.D. 1400 mm (55.1")  
Max. Width 420 mm (16.5")  
Max. Weight 1250 kg (2,756 lbs.)

<b>VHIN 8002</b>	400V, Yoke: 150 Yoke, Flash Alarm
<b>VHIN 8003</b>	450V, Yoke: 150 Yoke, Flash Alarm
<b>VHIN 8004</b>	500V, Yoke: 150 Yoke, Flash Alarm



## VHIN 900 Models

Custom size and capacity design. Powerful heater for exceptionally heavy components up to 11,000 kg (24,251 lbs.).

Min. Bore 145 mm (5.7")  
Max. O.D. 2500 mm (98.4")  
Max. Width 700 mm (27.6")  
Available for 400V, 450V  
and 500V power supplies.  
95 kVA

**Contact your local Timken representative for assistance in building a custom solution for extremely large heaters.**



# NEW HEATER MODELS - TURBO DESIGN

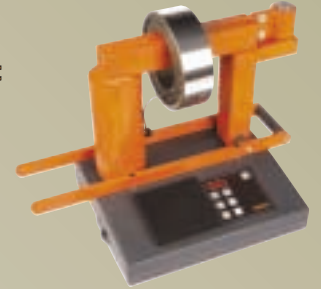
- Powerful turbo design for demanding industrial applications
- Maximum capacity for both work piece sizes and heating capability
- Plug & Heat design models are delivered with a molded plug\*  
\*available for 120V and 230V models only
- Safe: all Timken heaters automatically select the most effective power setting to ensure optimal and balanced heating

## VHIS 75 Model

Plug & Heat Turbo Swing Arm Model

Min. Bore 15 mm (0.6")  
 Max. O.D. 750 mm (29.5")  
 Max. Width 230 mm (9.1")  
 Max. Weight 95 kg (209.4 lb)

<b>VHIS 751</b>	230V, Yoke set: 14/20/40/60
<b>VHIS 752</b>	120V, Yoke set: 14/20/40/60
<b>VHIS 753</b>	230V, Yoke set in carrier: 10/14/20/30/40/50/60
<b>VHIS 754</b>	120V, Yoke set in carrier: 10/14/20/30/40/50/60

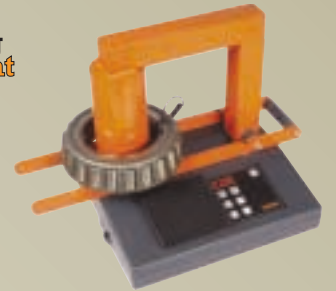


## VHIN 75 Model

Plug & Heat Turbo Model

Min. Bore 15 mm (0.6")  
 Max. O.D. 750 mm (29.5")  
 Max. Width 230 mm (9.1")  
 Max. Weight 95 kg (209.4 lb)

<b>VHIN 751</b>	230V, Yoke set: 14/20/40/60
<b>VHIN 752</b>	120V, Yoke set: 14/20/40/60
<b>VHIN 753</b>	230V, Yoke set in carrier: 10/14/20/30/40/50/60
<b>VHIN 754</b>	120V, Yoke set in carrier: 10/14/20/30/40/50/60



### HEATING EXAMPLES: 20-110°C (68-230°F)

Voltage	Work Piece	Weight	O.D.	Bore	Heating Time
110V	6314	2.6 kg 5.7 lbs.	150 mm 5.9"	70 mm 2.8"	1.5 min.
110V	23148	63.0 kg 138.9 lbs.	400 mm 15.7"	240 mm 9.4"	53.0 min.
230V	23148	63.0 kg 138.9 lbs.	400 mm 15.7"	240 mm 9.4"	53.0 min.
230V	23156	95.0 kg 209.4 lbs.	460 mm 18.1"	280 mm 11.0"	45.0 min.

## VHIS 400 Model Turbo Design

Mobile extra-powerful heater with unique swing arm

Min. Bore 60 mm (2.4")  
 Max. O.D. 920 mm (36.2")  
 Max. Width 350 mm (13.8")  
 Max. Weight 550 kg (1,212 lbs.)

<b>VHIS 4001</b>	400V, Yoke set: 40/60/80
<b>VHIS 4002</b>	450V, Yoke set: 40/60/80
<b>VHIS 4003</b>	500V, Yoke set: 40/60/80

### HEATING EXAMPLES: 20-110°C (68-230°F)

Work piece	Weight	O.D.	Bore	Heating Time
Bearing 23156	95.8 kg 211 lbs.	460 mm 18.1"	280 mm 11.0"	4 minutes
Gear wheel	300 kg 661 lbs.	600 mm 23.6"	210 mm 8.3"	3 minutes



Sliding support for heating in horizontal position.



**WARNING**

Proper maintenance and handling practices are critical. Failure to follow installation instructions and to maintain proper lubrication can result in equipment failure, creating a risk of serious bodily harm.

Timken® is the registered trademark of  
The Timken Company  
[www.timken.com](http://www.timken.com)

**TIMKEN**

---

©2005 The Timken Company  
Printed in Europe  
Ref:E0335-GB

# TIMKEN



# INDUCTION HEATERS

*Equipping you to install, remove and service bearings, gears, wheels and other industrial and automotive parts*

THE TIMKEN COMPANY

Less Friction.  
More **Solutions**

# INDUCTION HEATERS

With more than 100 years of experience in bearing technology, Timken understands the importance of proper maintenance procedures in maximizing product and equipment life. High-quality Timken maintenance products help to decrease down-time and lower operating costs.

Our line of maintenance tools are an example of how we extend beyond bearings with friction management solutions to keep your business running smoothly. These value-added products are grounded in our knowledge of motion, lubrication, friction and metallurgy. Induction Heaters are designed to help you extend bearing life in your applications through proper installation, removal and service.

For more than 100 years, Timken has provided quality products to the industrial marketplace. Induction Heaters are made to the same exacting quality standards you've come to expect from Timken® bearings. Our field support team is available to help you use the tools appropriately, as well as identify other Timken solutions that may boost your productivity and save you money.



Timken offers a large assortment of high-quality induction heaters designed for demanding industrial applications. They can heat and radially expand a wide variety of gears, rings, couplings, bearings and other components.

All heaters are produced in accordance with International (IEC) and European (CE) health and safety requirements. They feature a microprocessor-controlled power supply, automated time and temperature control and automatic demagnetization.

## WHY CHOOSE AN INDUCTION HEATER?

Induction heating is a superior, fast and controlled heating method. It is a safe and environmentally friendly alternative for traditional heating methods such as ovens, oil baths or blow torches. These methods cause smoke, fumes or oil waste and are hazardous for personal health and safety.

Timken induction heaters use the principle of induction, similar to a transformer. The heater and yokes remain cool; only the work piece is heated. During the induction heating cycle, a certain degree of magnetism occurs. All Timken heaters demagnetize automatically after each heating cycle.

## VERSATILITY, SAFETY AND QUALITY

Timken induction heaters can be used for heating gear wheels, bushings, couplings and other components. Proper mounting lengthens the life span of your equipment, and controlled induction heating helps prevent unnecessary damage.

Digital electronics provide optimal control during the heating process and automatically select the most efficient power supply to ensure balanced and fast heating.

Timken induction heaters are dependable. The robust and easy-to-use designs offer you reliable heaters that are suitable for continuous operation in industrial environments.



## Induction Heater Warnings



**DO NOT WEAR METAL OBJECTS OR WATCHES.**



**READ THE INSTRUCTIONS.**



**USE HEAT-PROTECTIVE GLOVES.**



**PROHIBITED FOR PEOPLE WITH A PACEMAKER AND/OR HEARING AID.**

**WARNING:**  
Proper maintenance and handling practices are critical. Failure to follow user manual can result in equipment failure, creating a risk of serious bodily harm. Since our products are subject to continuous improvement, we reserve the right to make changes.